

USB DRIVER INSTALLATION

In order to function properly, the USB to RS-232 converter cable (CBLUSBRS) requires installation of the proper USB driver files. Further, the PC must be configured to assign the cable to a suitable COM port.

DRIVER INSTALLATION

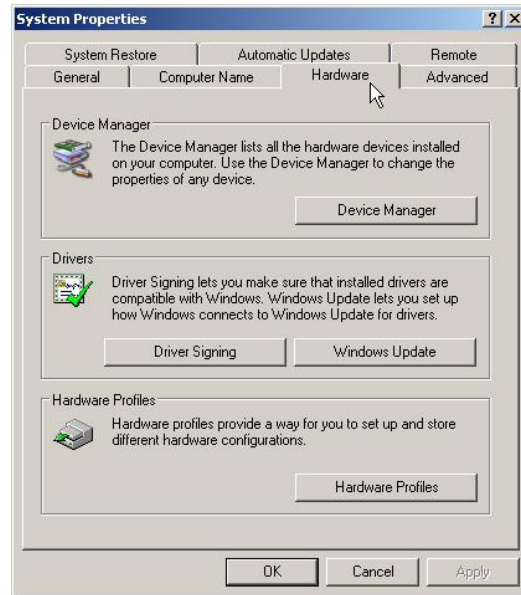
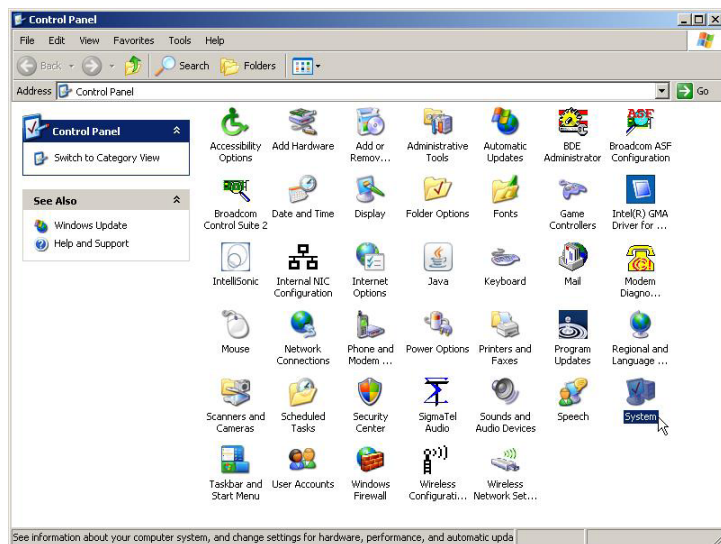
Connect the CBLUSBRS cable to one of your PC's USB ports. Windows will prompt you, indicating that a new device has been found and will install the driver automatically.

If the driver did not install, navigate to the following directory and run the GoldX.exe program:
C:\Program Files\Red Lion Controls\Crimson 3.0\Device\GoldX

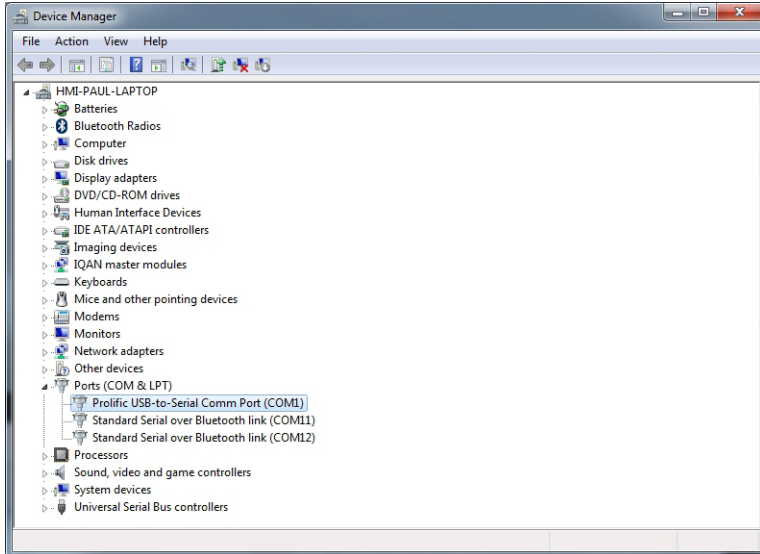
PORT CONFIGURATION

Crimson 3.0 allows you to download via Ethernet, USB or serial. Since the CBLUSBRS is converting USB to serial, you must select to download via serial. However, you must first make sure that the CBLUSBRS is assigned to COM port in the range of COM1-COM4.

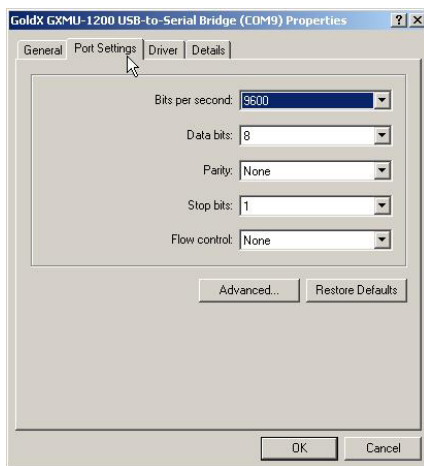
Go to Windows Control Panel, and double-click the System icon. Then, select the Hardware tab, and click the Device Manager button.



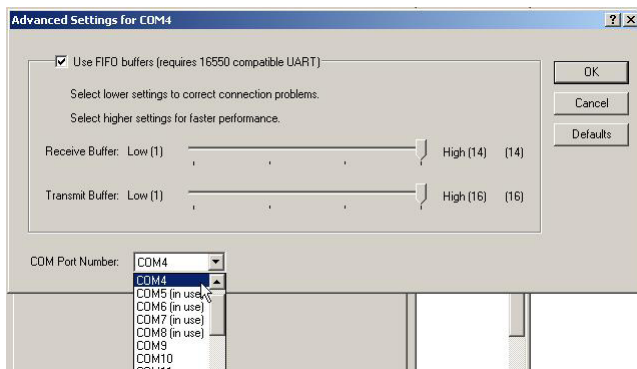
Navigate to the item Ports (COM & LPT), and select the Prolific USB-to-Serial Comm Port cable from the list. If the assigned port is COM1, COM2, COM3 or COM4, there are no other steps required. Simply make note of the assigned COM port number.



If the number exceeds COM4, double-click cable item to open the properties dialogue. Select the Port Settings Tab, and click the Advanced button.



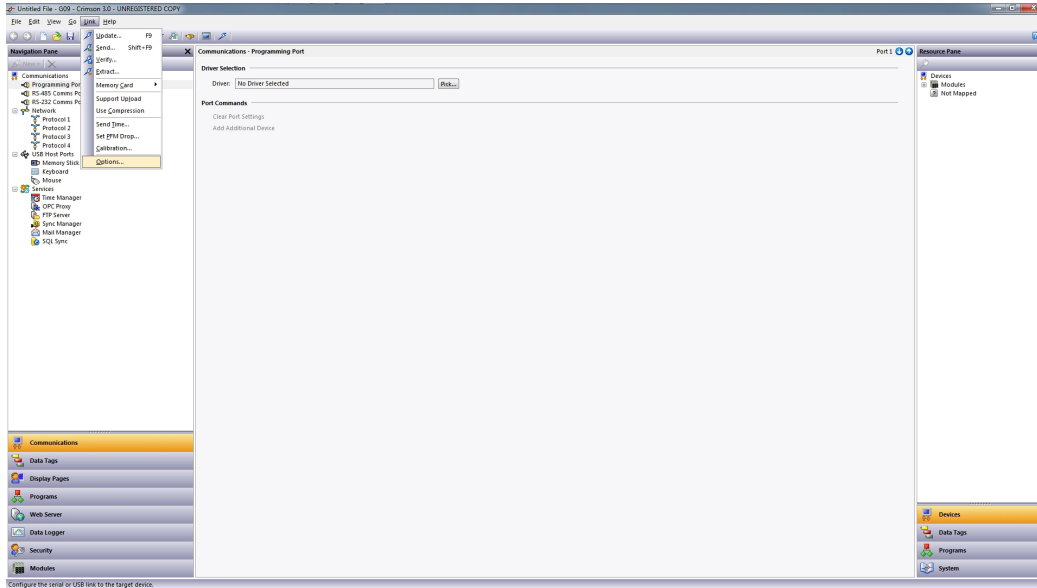
Select a COM port in the range of COM1-COM4. If all COM ports within the range are marked with (in use), you may still proceed. However, for your computer's peripherals to work properly, you may need to undo this change later.



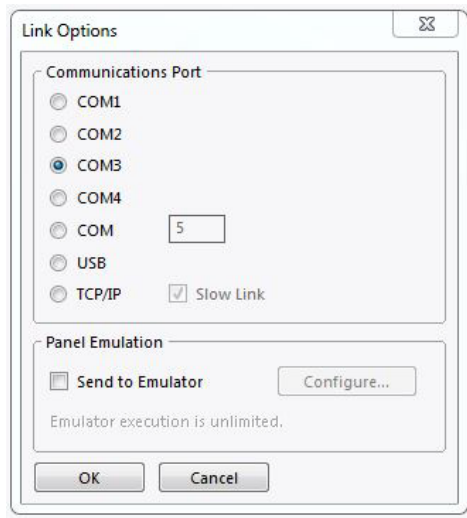
After selecting an appropriate COM port, click the OK button.

CRIMSON 3.0 SETUP

Run Crimson 3.0, and go to Link -> Options.



Select the Communications Port that matches the COM value assigned to the CBLUSBRS cable.



That completes the configuration necessary to download via the CBLUSBRS converter cable.

LIMITED WARRANTY

The Company warrants the products it manufactures against defects in materials and workmanship for a period limited to two years from the date of shipment, provided the products have been stored, handled, installed, and used under proper conditions. The Company's liability under this limited warranty shall extend only to the repair or replacement of a defective product, at The Company's option. The Company disclaims all liability for any affirmation, promise or representation with respect to the products.

The customer agrees to hold Red Lion Controls harmless from, defend, and indemnify RLC against damages, claims, and expenses arising out of subsequent sales of RLC products or products containing components manufactured by RLC and based upon personal injuries, deaths, property damage, lost profits, and other matters which Buyer, its employees, or sub-contractors are or may be to any extent liable, including without limitation penalties imposed by the Consumer Product Safety Act (P.L. 92-573) and liability imposed upon any person pursuant to the Magnuson-Moss Warranty Act (P.L. 93-637), as now in effect or as amended hereafter.

No warranties expressed or implied are created with respect to The Company's products except those expressly contained herein. The Customer acknowledges the disclaimers and limitations contained herein and relies on no other warranties or affirmations.

Red Lion Controls
Headquarters
20 Willow Springs Circle
York PA 17406
Tel +1 (717) 767-6511
Fax +1 (717) 764-0839

Red Lion Controls
Europe
Softwareweg 9
NL - 3821 BN Amersfoort
Tel +31 (0) 334 723 225
Fax +31 (0) 334 893 793

Red Lion Controls
India
201-B, 2nd Floor, Park Centra
Opp 32 Mile Stone, Sector-30
Gurgaon-122002 Haryana, India
Tel +91 984 487 0503

Red Lion Controls
China
Unit 302, XinAn Plaza
Building 13, No.99 Tianzhou Road
ShangHai, P.R. China 200223
Tel +86 21 6113 3688
Fax +86 21 6113 3683