

### VT-MODEM-2 “Self-Dialing” Industrial Modem Alerts Motorola-Airtouch “Flex” Numeric Pager

**Abstract:** The information in this document was created by SIXNET. It details the procedure for configuring “dial-up upon alarm condition” using the VT-MODEM-2 and a basic, numeric-only Motorola–Airtouch “Flex” pager. Upon successful completion of this setup, the remote user will be able to be alerted via pager, with a numeric code transmitted by the Self-Dialing modem, of an alarm condition at his PLC or other device. The remote user will be alerted when his PLC or other device, upon the alarm condition, forces the modem’s discrete input to go high.

#### Hardware and Software Used:

- VT-MODEM Setup Wizard
- Desktop PC running Microsoft’s Windows 95, 98, NT or 2000
- SIXNET VT-MODEM Setup Wizard v1.15
- (1) SIXNET “Self-Dialing” Industrial Modem (Part Number: VT-MODEM-2WW)
- “Straight through” serial cable (Part Number: VT-CABLE-MDM, included with the VT-MODEM-2WW)
- Motorola-Airtouch “Flex” numeric-only pager
- **Analog** phone line connection at modem end (digital line may not work). (It is recommended that the analog line not be routed through a PBX system).

#### Modem (SIXNET VT-MODEM-2) Setup Procedure

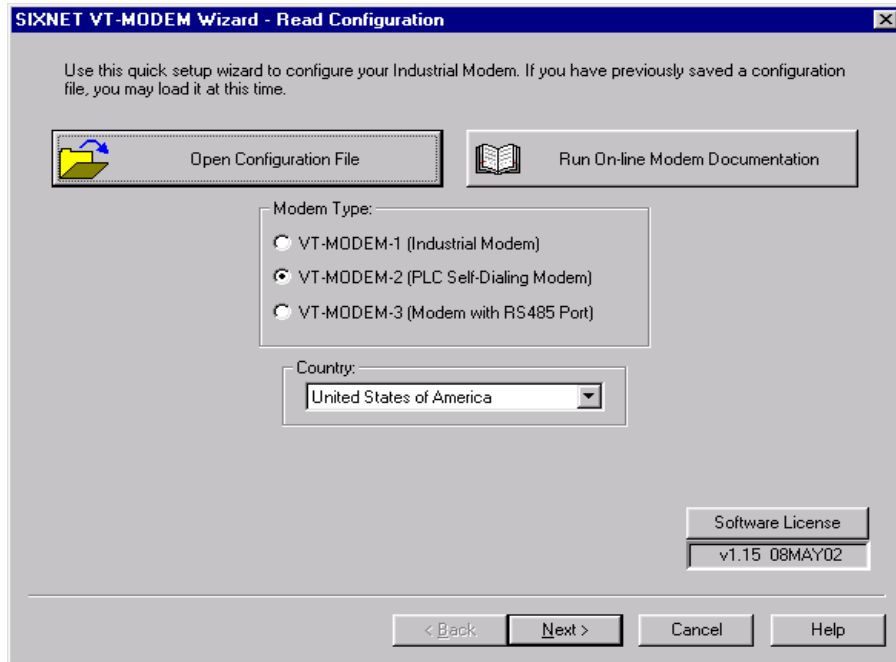
Use SIXNET’s VT-MODEM Setup Wizard to configure the Self-Dialing modem:

**Note:** *For information on how to use the Modem Setup Wizard, please consult the SIXNET VT-MODEM online help guide located on the SIXNET CD or installed with the Wizard.*

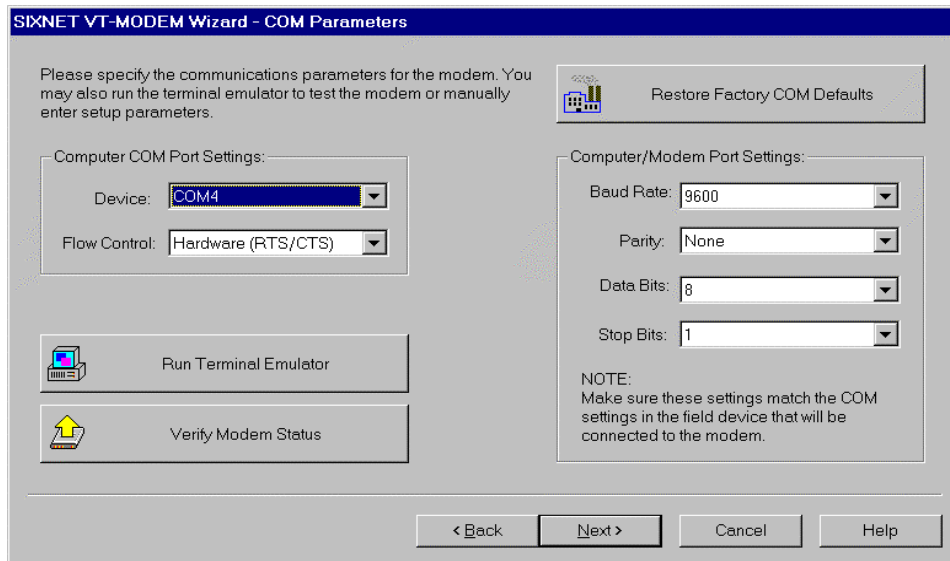
The Self-Dialing modem is configured by connecting the straight through cable(VT-CABLE-MDM), which comes as part of the Industrial Modem package, to the serial port on the modem and to the serial port of the PC (e.g. COM4 in the following example). The Self-Dialing Modem is selected in screen shot 1. The PC com port used to configure the modem is selected in screen shot 2. In screen shot 3, the modem’s dialing sequence is configured in the “first phone#” field: the pager’s local 7-digit phone number is specified, followed by 3 commas (long pause), a numeric identifier with each digit separated by a comma (in this case, the 10-digit phone number of the phone line at the PLC), and ending with the pound symbol (pager end-of-message tone). In screen shot 4, the modem’s dial-tone duration parameter is set to maximum (255) to ensure data integrity. Screen shots 5 and 6 detail saving the configuration profile (recommended) to a local hard drive folder “c:\Sixtrak”. After the profile is saved, settings are

written down to the Self-Dial Modem using the button on screen shot 5 labeled “Write modem and Self-dial setup to the modem.”

You are now ready to attach the Self-Dialing Modem to power, a phone line and a PLC (or other device). The motorola\_num\_pager.6ms file shown in this example is available on the SIXNET CD-ROM that shipped with your modem or on our website at [www.industrialmodem.com](http://www.industrialmodem.com).

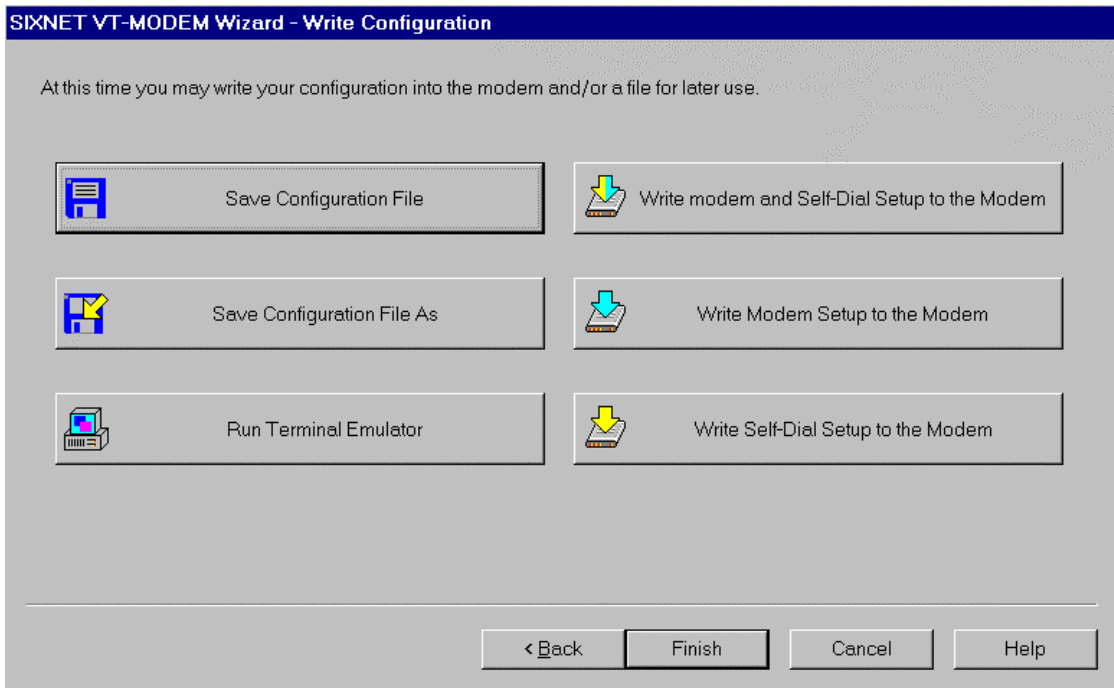


SCREEN SHOT 1

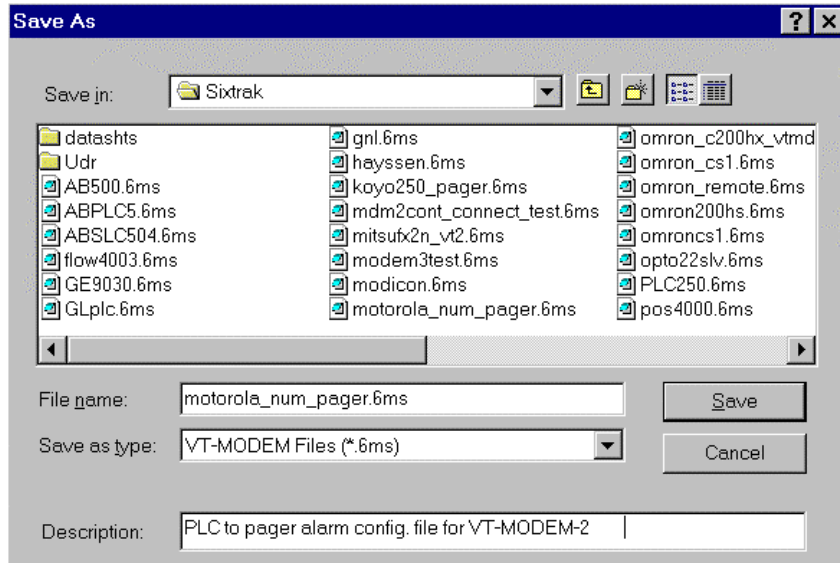


SCREEN SHOT 2





SCREEN SHOT 5



SCREEN SHOT 6